

# Physio-Control LIFEPAK<sup>®</sup> 12 / 15, LIFEPAK<sup>®</sup> 500, Windows XP/7/8,8.1/10 (32 -64 bit) Installation Guide

**NOTE:** This USB cable has been tested to comply with FCC and CE certifications. Extending the cable may cause undesirable results.

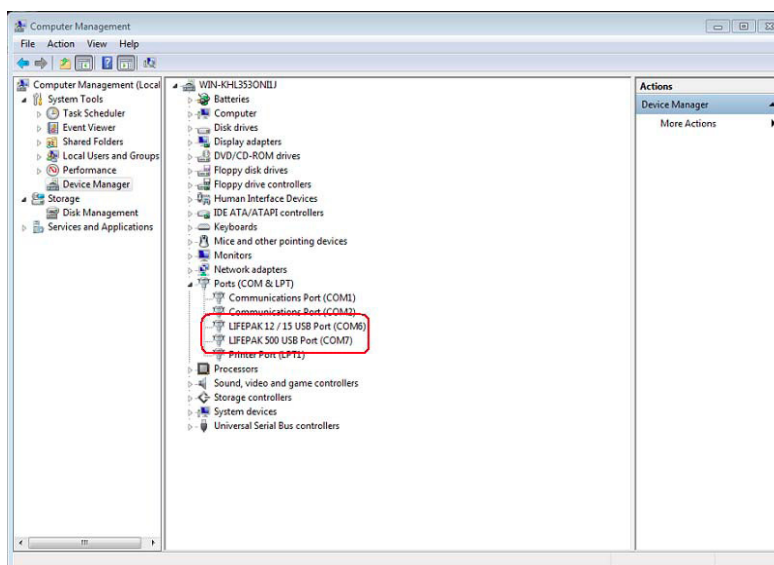
Please be advised that this digitally signed driver package is for the Physio-Control LIFEPAK<sup>®</sup> 12 / 15 and LIFEPAK<sup>®</sup> 500 USB Cables only, for use with 32bit and 64bit versions of Windows XP, 7, 8/8.1, and 10 Operating System families!

The Physio-Control LIFEPAK<sup>®</sup> 12 / 15 and LIFEPAK<sup>®</sup> 500 USB Cables can only be installed by a user with Administrator account privileges.

For ease of installation, it is recommended to perform this installation from CDROM.

## Windows Installation Instructions:

1. To begin the installation of the Physio-Control LIFEPAK<sup>®</sup> 12 / 15 or LIFEPAK<sup>®</sup> 500 USB Cable, insert the installation CD into the CDROM drive of your computer system, and allow Windows sufficient time to read the CDROM contents.
2. At this point, insert the Physio-Control LIFEPAK<sup>®</sup> 12 / 15 or LIFEPAK<sup>®</sup> 500 USB Cable into any free USB port.
3. Windows will now install your Physio-Control LIFEPAK<sup>®</sup> 12 / 15 or LIFEPAK<sup>®</sup> 500 USB Cable without any further user intervention on your behalf.
4. To verify the USB Cable driver installation, open your system Device Manager. Examine the ports class, and now, you will observe either the Physio-Control LIFEPAK<sup>®</sup> 12 / 15 or LIFEPAK<sup>®</sup> 500 USB Cable properly installed, depending on which cable variant you have.



## **Code-Stat / DT Express Configuration**

Make sure to disable communications on Code-Stat / DT Express before inserting the cable into the computer.

Plug the LIFEPAK<sup>®</sup> 12 / 15 or LIFEPAK<sup>®</sup> 500 USB Cable into the computer with Code-Stat / DT Express NOT running. Go to system configuration in Code-Stat / DT Express (or bring up the program, disable communications and go to System Configuration). Leave the LIFEPAK<sup>®</sup> 12 / 15 or LIFEPAK<sup>®</sup> 500 USB Cable inserted in the computer (it does not have to be in the LIFEPAK<sup>®</sup> 12 / 15 or LIFEPAK<sup>®</sup> 500 for this installation process.)

LIFEPAK<sup>®</sup> 12 / 15 Users: As a selectable item, you should observe “COM 50 Direct”  
LIFEPAK<sup>®</sup> 500 Users: As a selectable item, you should observe “COM 70 Direct”

Select COM50 for the LIFEPAK<sup>®</sup> 12 / 15, and alternatively select COM70 for the LIFEPAK<sup>®</sup> 500. This is the COM port that will be used by Code-Stat / DT Express no matter which USB connector the cable is physically plugged into.

Re-enable Code-Stat / DT Express and you can now plug the cable in to the LIFEPAK<sup>®</sup> and begin data transfer exactly as if a direct-connect (serial null modem) cable was being used.

A point to remember is that Code-Stat will drop COM50 (or COM70) from the configured ports list each time the cable is physically disconnected from the host computer. This is not different from the process that occurs when a USB-Serial adapter is used. The user must DISable, and then re-ENable communications with the cable plugged in each time it is re-connected to the computer.

